

# POTTERS NEWS



January 2008

Vol. 25, No. 3

(519) 293-3748

[www.londonpottersguild.org](http://www.londonpottersguild.org)

## PRESIDENT'S MESSAGE *Jane Paterak*

Happy new year everyone! It is hard to believe the holidays have already passed. I hope you had some time off to spend with family and friends.

We have already had a flurry of activity in the new year with the seize committee and in planning events for the upcoming months.

By now most of you should have received a letter inviting you to the special meeting of the London Potters guild on Monday January 21st. It is very important that you attend this meeting. It is your opportunity to hear all about the property we are proposing to purchase and to see the detailed plans we have put together outlining the renovation and transition plans to the new Clay Art Centre. We will ensure there is time for discussion, so please come with your questions and any concerns you may have. The Executive and seize committee have provided full support for this initiative. We recognize that this project cannot be a success without your full support so we encourage you to come with an open mind and ears, so that you can get the information you need in order to make an informed decision regarding the future of the Clay Art Centre and the London Potters Guild.

On other fronts, there are workshops scheduled for January

and February. The first be a workshop with the award-winning ceramic Artist Leslie McInally on Sunday January 20th. This should prove to be an inspiring workshop as she discusses the natural elements that influence her work and demonstrates the techniques she uses to create both sculptural and functional work. If you are interested in a series of classes, they are starting the week of January 14th and, last I heard, there were still some spots available.

Another exciting bit of news, the planning for the summer exhibition has begun. Maria Ricker came to talk to us at the general meeting and to elicit some of our input into the exhibition. There will be more to come on that. If you are interested in helping with the organization of the exhibition, please contact Pat Ball. As well, start thinking about some pieces you would like to make for the exhibition.

To end with, I want to share with you something that really struck me at our last general meeting. In-between the general meeting and the program, Marilyn Barbe had a stack of 110 letters to be folded and stamped for mailing the next day. She asked a few of us to help with the folding, stuffing and stamping. Within minutes, there were close to 20 members up at the front, reaching in to grab some letters and pitch in to help. In no time it was done.

It was a reminder to me of how willing every member of this guild is to give and help out with what ever needs to be done. It brought to mind an inspiring quote I came across while waiting in my dentist office before Christmas.

*We make a living with what we get  
We make a life with what we give  
Winston Churchill*

Wishing you the best for this new year!

## SEIZE THE CLAY *Marilyn Barbe Campaign Chair*

A building has been found to house London's Clay Art Center. The offer was made; we are now waiting for counter offers etc. These are exciting times. Time and again we have been told that we cannot receive grants without a property. It is my hope that by the time you read this we will be on our way to owning just such a property.

Please note that we are calling a special meeting on **Monday January 21, 7:00 pm at East Lions Artisans Center** to vote on whether or not to buy the building. Vote will be by ballot. Presentations will be made regarding the building, grant opportunities, financing and legalities. No proxy voting, you must be there to vote.

A lot has happened in a very short time. After the building was viewed the results were presented to the Seize the Clay Committee, they asked to see it as well, and then the executive were invited to have a viewing. Excitement grew as everyone realized this was what we have been looking for. Maria, Jane, Laila and Darlene then met during a day long meeting and created a business plan geared toward the purchase. We owe them a great debt of gratitude for doing this; remember this was taking place during the Christmas season.

Armed with an awesome business plan, the Executive and Seize Committee met to discuss the building. Maria made a three hour presentation of the business plan. The plan has sound numbers with amazing flexibility. At the end of the business plan presentation and some discussion, we voted unanimously to make an offer on the building. The offer was made. The offer has several conditions, the most important is being approval of the London Potters Guild membership. That's you.

Last Tuesday, Maria made a presentation, regarding a capital grant, before Board of Control. As you saw at the general meeting, her presentation was well received.

And so, we are on a roll waiting to hear about our offer. These are promising times for the Guild. Please come out to the meeting.

On another positive note, last June Lisa Plancke sent a grant application to the Million Dollar Foundation. On December 10 we learned we were the recipients of a \$3400.00 grant from their organization.

## SALE UPDATE *Beth Turnbull Morrish*

Happy New Year fellow clay lovers! Have you resolved to make more pots, try new techniques, and work on increasing your profile? I hope so because the London Potters Guild needs YOU at our Spring Sale!

Our Sale this year is on Friday April 25, 4-9pm and Saturday April 26, 9am-6pm. The times and days are a little different than other years due to the booking arrangements, so be sure to note there's no Sunday this time.

It's hard to believe Spring is just around the corner, but it's time to start planning and making new wares already. Planters and vases are always a hit when people are thinking about gardening. The Sale is just two weeks before Mothers' Day: how about a mug or teapot for mom? And then there's wedding season: platters and big bowls make excellent one-of-a-kind gifts. Berry bowls are popular, and how about goblets?! – Every sale I hear at least one person asking for goblets! Use your imagination – look at your books – get one out from the library. Or go visit Jonathon's. I'm not suggesting we copy anyone's work, but I sure come away inspired every time I visit his gallery!

The London Potters Guild Sales are growing well, almost every time we are raising our attendance levels and sales figures! We're on a good roll and we've got the chance to snowball it bigger and better. Every sale I hear comments on how good the room looks and how the quality of the work improves each year. We must continue this trend. The Sale Committee is devoted to making our Sales professional,

go-to events. You'll notice a few new points in the Sale Contract all aimed at raising the bar for all of us.

We're also planning a contest for participants for the best displays. We're hoping to bring in a guest juror to do a presentation on effective retail displays and choose some of the best ones at our Sale. This will get us thinking about not only our work, but how to present it in the best possible way to highlight its' attributes.

Many of these ideas come from comments, participants and members. At our fall Sale we sent out a survey asking participants for their feedback. If you have not already filled this out please take a few minutes and put some thought into it – this is YOUR Sale!

Read over the Sale Contract carefully, and keep it in a safe place to refer back to. Please fill out the 2nd page and mail it to me, due before April 1st. I have asked that they be returned by post so that I do not lose any. Last time I had people coming into classes when I was teaching and handing them to me at all sorts of inopportune times – I was constantly worried I'd lose them!

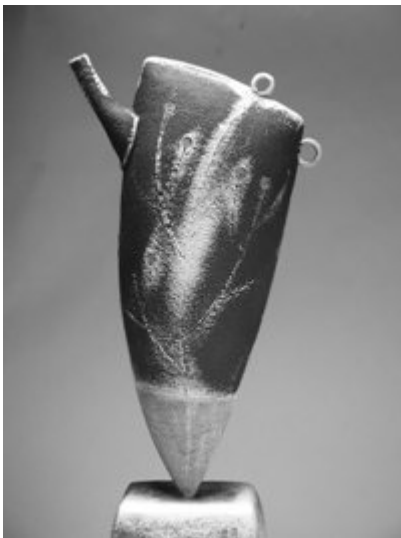
Be sure to read your next newsletter for more details, and at the April meeting we'll go over all the details again. Feel free to contact myself or a member of the Sale Committee if you have and questions or concerns. As always, I will thank the committee for their constant volunteerism: Teresa Ainsworth, Ron and Pat Ball, Jane Evans, Jane Paterak, Tracy Robinson, Gene Timpany, and Sandy Wishart. And thank you to you the members, because without you there would be no Sale!

Looking forward to receiving your entries and surveys.

## WORKSHOPS *Chris Snedden*

Hello Everyone! I hope you had a great holiday and are ready to get excited about clay again in preparation for the spring!

It's confirmed! Tony Clennell is coming to London to do a workshop! Mark the weekend of April 19th and 20th on your calendar. Tony will discuss his recent trip to China and demonstrate his vigorous approach to working in clay. See his work on his website [www.sourcherrypottery.com](http://www.sourcherrypottery.com). Registration begins immediately so get your checks in early to reserve your spot!



The workshop with Leslie McNally is coming up soon and I already have 15 people signed up to attend! Leslie makes really cool hand built pots out of paper clay and was recently Fusion's "Artist of the Month". Don't miss this opportunity to spend a day working with one of Ontario's finest clay artists in a participatory workshop. There's lots of space so don't hesitate to sign up. All you need to bring with you is your hand building

tools, a rolling pin, some clay to work with, and a dish for pot luck.

To register for either workshop:  
Call: (519) 476 -9433 or  
Email:  
[clayguy4u@chrissnedden.com](mailto:clayguy4u@chrissnedden.com)

When:  
Sunday, January 20th, 2008,  
9am -4pm for Leslie McNally

Saturday and Sunday, April 19th  
and 20th, 2008 for Tony Clennell

Where: Artisan's London  
Common Room

Cost \$40.00 for Leslie McNally  
and \$80 for Tony Clennell  
Send check made out to The  
London Potters Guild to:  
Chris Snedden  
115 Emerson Ave.  
London ON. N5Z 3L5

## PROFESSIONAL DEVELOPMENT *Wendy Lycett*

Back by popular demand!!!  
**Paper Clay – with Shirley  
Clifford**

*Sunday February 10th, 2008  
(Guild Classroom)  
10:00 AM to 4:00 PM with 1/2  
hour lunch. Maximum 8  
participants.*

Fee: \$30.00 LPG members, post-  
dated cheque must be submitted  
upon registration or you are not  
guaranteed a seat.  
\$40.00 for non members. Non  
members may register if seats are  
available after the withdrawal  
deadline date for LPG members

*Deadline for withdrawal: Sunday  
January 27, 2008*

Throwing and working with paper  
clay. Basic Throwing skills  
required.

“Participants will learn the advantages of working with paper clay. Throwing bigger and taller is one advantage which I like. I will demonstrate how to throw one full bag of clay”. – Shirley Clifford (for more information on Shirley's work visit <http://www.clayandglass.on.ca/members/sclifford.htm>)



Material list:

- For the hands-on workshop, participants should bring their own throwing tools and their own bats if they want to take their work home to trim and bisque etc. Or if you leave the work to be finished in the LPG studio, then use LPG bats.
- Paper clay available for purchase at the studio. Approximate costs, 15.00 per half box.

## **NEW!!! London Potter's Guild Intensive Working Group – Skills Development Workshop**

What: Glaze Development  
Workshop (2 day session)  
Where: LPG Classroom  
When: Sunday January 27, 2008  
Sunday February 17, 2008

Time: 10:00 AM- 2:00 PM both  
days  
Cost: \$15.00 LPG members only  
Group Leader: Chris Snedden

Join LPG members in an  
intensive study of glaze colorant  
cross blending. Learn how to take  
known glaze base recipes and run

through processes to add new colorants and create new glaze colors. This is your chance to experiment with glazes and learn to mix and make new and unique blends which can be fired in our kilns. Participants will be able to keep small samples of glazes made and will help to establish potential new big batch glazes for the guild. This is a work study group with the leader providing basic directions but the group working as a whole and individually to learn and experiment with technique. Bring any glaze recipes you have and your own lunch.

Register at the guild as per regular workshops. Maximum 8 participants.

## CLASSES *Cathy Molitor*

Classes Winter Term

Thanks to all who helped round up a few more students and fill some classes! Most of our winter lessons are now able to go ahead with enough students.

Due to the feedback from past students that the classes were never long enough we are trying 10 week classes this winter. This has increased the price but hopefully students will enjoy their lengthened sessions. We won't be able to do this in the Spring as the pool guards need their space in early June so we'll be back to 8 week classes.

Once again we have 4 Beginner classes, 2 Children and Teen classes, Handbuilding class and Surface Decoration class. I hope you all enjoy memories of your first student pots as you see the neat stuff coming through the kiln room from our students.

## PROGRAM *Alice Nagus*

February after meeting program

NCECA is coming up - find out what it is and why so many from London and Sarnia will be in Pittsburgh in March. Teresa Ainsworth will be discussing why she went last year and is going back again this year.

## STUDIO REPORT *Chris Snedden*

My first report as Studio Technician! Well, I must say I have big shoes to fill in following Beth into this position. Many people don't realize the amount of work and thought that has gone into the efficient organization of the LPG Studio already. Beth Turnbull Morrish has worked very hard and served us extraordinarily well. I'm sure I speak for everyone when I congratulate Beth on her position at Lambton Collage in Sarnia and thank her for all her hard work!

I must say that the level of participation in the studio is very impressive! Special kudos go out to the kiln loaders and unloaders who have contributed to the general flow of work through the studio during the last weeks before the show, at the end of the fall session of classes, and the rush to get presents done for gift giving over the holiday season. Teresa Ainsworth, Ethel Mitrovic, Brenda Duncan, our new Artist in residence Soo Nahm, and of course, Beth, were all invaluable participants in the processing of members and student work! Thank you! Thank you! Thank you!

Also I'd like to thank to Nancy Marshal for pugging the reclaim! That's a bit of a job I'd say, and I

really appreciate the help! Good exercise! There is lots of reclaimed clay available for purchase now.

Finally, I'd like to extend special thanks Mike Nichol and Charley Leach for helping me unload the Clay order from Tuckers in the middle of their last class with Rene Wortel (Sorry Rene). The load arrived more promptly than I had anticipated, and these two gentlemen stepped up and lent a hand slugging boxes. Thank you Sirs!

Remember: If I can help show you how to use a piece of equipment or offer advice on some work you're doing then please don't hesitate to ask.

Regular studio technician hours are:

Monday 3 – 6

Thursday 3 – 6

Saturday 9 - 12

Cheers all!

Chris Snedden

Ph: (519) 476-9433

E: clayguy4u@chrissnedden.com

## MEMBERSHIP *Teresa Ainsworth*

The London Potters Guild is continuing to attract new members and would like to welcome the year's new members:

Stacy Ferguson  
Renata Kolavera  
Denny Sofia Loiaza  
Lionel Morise  
Gwen Myall  
Sue Nham  
Mary Roberts-Payne  
Sacha Sebestyen  
Trudy Sharp-Dobson  
Carol Wong

## WEBSITE UPDATE *Julie Ryan*

Website continues to grow

Many members have been submitting photos of their work for the gallery of our website. This is a great place to show your work without having to have your own website. Information about classes, shows, workshops, and the Seize the Clay campaign are also on the website. If you would like to submit photos of your work or have other suggestions for improving the website, please contact Julie Ryan through the Webmaster email address on the Contacts page of the website.

## EVENTS

### *The LPG Exhibition*

The London Potters Guild will be hosting an exhibition of pottery this coming summer. Maria Ricker, curator of the Woodstock Art Gallery will be working closely with us to present a very professional show. For those who are new to the guild we held an exhibition at this site four years ago and it went very well. The show will run from July 26th to Sept 13th. Pottery will need to be submitted by June 22, 2008. Potters wishing to submit will be allowed 2 pieces each (\$10.00 per piece submission fee). There will be several prizes awarded including prizes for novice potters (those who have been potting less than 2 years). We will be opening the exhibition up to other area Guilds to raise the bar. We were lucky enough to get 9 volunteers to assist with this year's exhibition (Many thanks). We will be looking for two jurors so if anyone has any interesting ideas please email Pat Ball at pat\_ball@rogers.com

Invitations for submissions will be sent out to the other guilds soon. Lucky us, we get a head start on creating all our beautiful pots. So London, let's see what you've got. Happy potting and for anyone who has never entered an exhibition, it's a great learning experience so take the leap and join in.

### EXECUTIVE LISTING

#### **President**

Jane Paterak  
jpaterak@odyssey.on.ca

#### **Vice President**

Catherine Craig  
catherineacraig@hotmail.com

#### **Secretary**

Penni Stoddart  
penelopepots@sympatico.ca

#### **Treasurer**

Laila Costello  
lcostello@jhryder.com

#### **Classes**

Cathy Molitor  
cmolita052@rogers.com

#### **Membership**

Teresa Ainsworth  
tainsworth@odyssey.on.ca

#### **Visiting Artist Workshops**

Chris Snedden  
clayguy4u@chrissnedden.com

#### **In-House Workshops**

Wendy Lycett  
WLYcett@fanshawec.ca

#### **Studio**

Gene Timpany  
gtimp@sympatico.ca

#### **Programs**

Alice Nagus  
anagus@sympatico.ca

#### **Sales**

Beth Turnbull-Morrish  
turningbullpottery@hotmail.com

#### **Artisan's London**

Joey Ianni  
terrapottery2001@yahoo.ca

#### **Seize the Clay**

Marilyn Barbe  
mbarbe@execulink.com  
Darlene Pratt  
prattdarlene@hotmail.com

#### **Newsletter**

Jean Chen  
jean\_jie\_chen@yahoo.ca

#### **Publicity and Public Relations**

#### **Webmaster**

Julie Ryan  
julieryan@rogers.com

[www.londonpottersguild.org](http://www.londonpottersguild.org)

# **THE LONDON POTTERS GUILD ANNUAL SPRING SHOW AND SALE**

Carling Heights Optimists Community Centre, 650 Elizabeth St., London, Ontario

**Friday, April 25, 4pm-9pm, Saturday April 26, 9am-6pm**

---

## ***CONDITIONS OF ENTRY.***

1. To participate in the sale you must be a current member of the LPG.
2. All work must be done by the artist. (E.g. No glazing of commercial tiles or pottery).
3. No seconds allowed. No glaze defects, sharp edges, rough bottoms, cracks, etc. All work will be checked by quality control on the day of the sale between 2-4pm. Unacceptable pieces will be placed under tables.
4. Set up for the show is Friday, April 25, **NOON-2pm**. (Please note the earlier time this year!) Anyone arriving after 1pm will not be allowed to set up. You must be finished your setup by 2pm to allow for the quality control team to do their job.
5. Table coverings must be a plain cloth, extend to the floor and cover three sides. (This will also be checked by quality control, if your cloth does not reach the floor you will be required to fix it.) No fake flowers. Props should be marked as to whether they are included or Not For Sale: NFS.
6. Participants must work two consecutive shifts over the duration of the sale. You may supply an alternate person if you are unable to work your shift. You must arrive 15 minutes prior to shift.
7. Each sale participant must deliver at least one bundle of flyers to an assigned destination according to the Master List of galleries and arts organizations. This will assure all predetermined recipients receive flyers and there is no overlap. If you live out of town, we will send you a bundle and add your local galleries, arts organizations etc. to the Master List. (Sale participants should also hand flyers out to their own personal contacts.)
8. While LPG is insured for public liability, we are NOT RESPONSIBLE for any lost or damaged pieces. All items for sale are the responsibility of the participant. Potters are encouraged to keep their own inventory.
9. Participants may select one or two 6 ft tables (maximum two) or they can provide their own set up (ie: a free-standing display that fills the space of one or two tables, no larger).
10. Participants must keep in mind the number of pots they will require to keep their booth space reasonably full for the 2 day period. Displays should look as full at the end of the sale as they did at the beginning. Participants should be sure they choose the appropriate number of tables for the amount of stock they have.
11. All pottery must be clearly marked with a secure price tag. Your assigned number must appear above the price.
12. Pottery should include instructions for its intended use. Raku ware must be labelled as not for food.
13. New potters entering the sale must be juried in. This will take place at the March executive meeting.
14. Each sale participant must display a sign with their name or their pottery name. A plain, standardized cardstock sign will be provided, or you may use your own sign, provided that the lettering is at least one inch tall. Participants are also encouraged to have business cards and Artist's Bios.

By submitting this application you agree to abide by these terms and conditions.

Note: Location requests cannot be honoured, table location is randomly selected.

## ***ENTRY FEES***

Entry fees of \$20.00 per table (non-refundable) must accompany this application.

The LPG will receive a commission of 20% (cap of \$300.00).

Send cheque (no cash) payable to the LPG with this entry prior to **April 1, 2008** to:

**Beth Turnbull Morrish**

**71 Stevenson Ave.**

**London, Ont.**

**N5W 1Y1.**

**\*\*\*\*Entries MUST arrive by mail!** (It is too easy to lose them when they are handed to me at random).

Staple your check to the entry form below.

Any questions regarding the sale, please contact Beth Turnbull Morrish, Sales Co-ordinator at 519-951-9853 or by email: [turningbullpottery@hotmail.com](mailto:turningbullpottery@hotmail.com)

**YES, I WANT TO PARTICIPATE IN THE 2007 SPRING SALE.**  
**(Please print legibly.)**

NAME: \_\_\_\_\_

ADDRESS: \_\_\_\_\_

\_\_\_\_\_

PHONE: \_\_\_\_\_

EMAIL\*: \_\_\_\_\_

\*Please note that receipt of this contract and your cheque will be acknowledged by reply to the email provided here. You will receive periodic updates by email. If you cannot use email you will be contacted by phone to acknowledge the receipt of your entry. Sale updates and information will also be available in your LPG Newsletter and announced at LPG General Meetings.

I agree to the Conditions of Entry as stated above.

Signature \_\_\_\_\_ Date: \_\_\_\_\_

I require access to hydro

***Please choose ONE of the following options:***

I wish to participate in the beginners table (12 or less pots, first-timers only): No fee.

I wish to split a table with \_\_\_\_\_: \$10 each, \$20 total.

I require ONE - 6' x 2 ½' table: \$20 total.

I require TWO - 6' x 2 ½' tables: \$40 total.

I wish to use my own free-standing display the size of: 6' x 2 ½': \$20 total.

I wish to use my own free-standing display the size of: 12' x 2 ½': \$40 total.

## LPG Sale Participants Survey

***Hello Fall Sale Participants,***

***Thank you for participating in the London Potters Guild Fall 2007 Show and Sale.***

***As your dedicated Sales Committee we are continually seeking creative ways to improve the Sale. Some of our goals are to continue to raise the profile and professionalism of the show, draw more attendees and of course sell more pots!***

***Please take a few moments to respond to this questionnaire and give your comments and constructive criticism.***

***Thank you in advance, Beth Turnbull Morrish.***

1. What new places would you like to see the Sale advertised: magazines, newspapers, newsletters, television programs, radio shows, etc?

---

---

---

---

2. Can you think of any places we should be dropping flyers that are not on the "Master List" yet, Arts or Community Organizations, galleries, etc?

---

---

---

---

3. Any ideas for drawing more attendees, especially on Sundays?

---

---

---

---

4. What features you would like to see added to our Sale to add to its appeal?

---

---

---

---

5. Are there any features about the sale that you would like to see changed and how could they be improved?

---

---

---

---

# January 2008

SUNDAY	MONDAY	TUESDAY	WEDNESDAY	THURSDAY	FRIDAY	SATURDAY
		1	2	3	4	5
6	7	8 General Meeting 7:30pm	9	10	11	12
13	14 WINTER SESSION CLASSES START	15	16	17 Seize the Clay committee meeting	18	19
20 WORKSHOP Leslie MacInaly 9 – 4 Pot luck lunch \$40	21 SEIZE THE CLAY Special meeting of general membershipVOTE	22	23 Seize the Clay committee meeting 10am (RSVP members only)	24	25	26
27	28	29	30	31		

# February 2008

SUNDAY	MONDAY	TUESDAY	WEDNESDAY	THURSDAY	FRIDAY	SATURDAY
					1	2
3	4	5 LPG Executive Meeting 7:00pm	6	7	8	9
10 WORKSHOP Shirley Clifford Throwing BIG 10-4 pot luck lunch	11	12 LPG General Meeting 7:30pm	13	14 VALENTINES DAY (throw a pot for your lover!)	15	16
17	18	19	20	21	22	23
24	25	26	27	28	29 <b>LEAP YEAR!</b>	