

November 2011

Vol. 29, No. 2

(519) 434-1664

www.londonpottersguild.org

PRESIDENT'S MESSAGE

Marilyn Barbe

As this is my final contribution to the newsletter, I would like to say thank you to some wonderful people. To all those who sat on the executive, which we now call a board, thanks for your incredible dedication to the London Potters Guild and the London Clay Art Centre. What a journey we have had moving from Churchill to Dundas, as smoothly as possible. I will never forget moving day – the day a dream became a reality.

Thanks to Laila; your steady hand on our finances is one of the reasons we are in such good financial shape. Thanks to Elly, for being such a dedicated and reliable secretary. Then there is Teresa; she has looked after memberships, the library, & she knows the inside of the building as well as anybody. Her help is always appreciated. Thanks to Cheryl and Chris and Gene for making the day to day operations of the Centre successful. Where would we be without Genet, who made classes a resounding success, and who was there to lend her store management expertise when we needed it the most?

I so appreciate everything that Beth has done for the sale, classes, and camps, and for listening to me when I was in need of a second opinion. To Maria and Darlene, whose exemplary dedication to the Seize campaign is inspiring. Thanks to those who keep the studio clean, who help with the store, the sales; those who empty the Centre for the sale and who clean up afterward.

What a team! Welcome to Nancy Marshall as president. Her successful management of the Professional Development Workshops is a fine example of her skills. A talented potter, Nancy is organized, energetic, and has some innovative ideas as we move forward. The Guild is in good hands.

Believe me when I say that I truly enjoyed my term as president. What a goal, what a great group of people to work with! There were good times, there were rough times, but the difficulties faded after every success, and oh, we have had success galore. At last month's general meeting I was encouraged to see so many young faces in the group. It has taken a lot of work to get to the point we are at; it will take a lot more work to continue. I can see

from the number of new members that there is ample hope for our future and many more accomplishments.

Nancy Marshall

The Christmas lights are up and the skating rink is being prepared at Victoria Park. The season for cuddly sweaters, crackling fires and holiday gatherings is upon us!



Our Potter's Guild winter party was a wonderful event. What fun to have it here at LCAC and see the place all decorated: thank you to Alice Nagus and her crew! A highlight of the evening was the raffling off of Beth Turnbull Morrish's fabulous donated cookie jar. Congratulations Tomoko Hayatsu for winning the prize.

Beth and her sales team organized another amazing November sale. Incredible

amounts of work, planning and volunteer time go into pulling off this event. There's the advertising, the flyers, the cash registers, the loading and off-loading of the trailer, the clean up, the set up, the reorganizing of the studio, and the staffing of the show itself. Thank you to all of you for making it all come together.



To help you combat the dangerous winter blahs, Genet Hodder has put together some terrific classes that begin in January. Patti Wilk, with help from Lisa Pace, has arranged a lively assortment of internal workshops to choose from. Have a look at their write-ups and get ready to learn some new techniques. Why not get out of the cold and into the warm atmosphere of a friendly class? If all of this is not enough excitement for you... this winter the transformation of the facade and second floor begins! So even though the Christmas lights are up and the skating rink is being prepared, don't forget you've got friends looking for you at the London Clay Art Centre, and all it takes is a plate of cookies and a pot of tea to create a party.

BUILDING PROGRESS

Darlene Pratt

Dear LPG Members and Supporters,

As you know London Clay Art Centre is well on the way to being completed by the end of 2012. Although we have been extremely fortunate to receive a large grant from the Government of Ontario through the Community Capital Fund in support of this goal, we must raise enough money to fully match the dollars coming from CCF.

As we continue our restoration and renovation, LPG Members can look forward to seeing our beautiful façade restored over the winter, and with your help we can finish the second floor and work towards installing a gas kiln.

You can donate as a one-time donation or in small payments over 2 years.

Don't forget that all donations are tax deductible (<http://www.cra-arc.gc.ca/chrts-gvng/dnrs/svngs/clmng1b3-eng.html>)

- ✓ For donations over \$200 in a calendar year you will receive 40% back
- ✓ For donations less than \$200 you will receive 20% back

How do the numbers work?

- ✓ You give up **one** Tim

Horton's coffee per week and feel good because you are doing it for a good cause

- ✓ You use the saved money to make a **\$10 monthly donation** to the LPG for a period of **two years**
- ✓ You receive **\$48 back** (\$24 each year at tax time)

Tremendous impact from simply giving up a cup of coffee! And if you give more, you get more back.

How to donate:

- ✓ Online: click on the Canada Helps Icon at <http://londonpottersguild.org/seize/seize.htm>
- ✓ By cheque: made out to "The London Potters Guild"
- ✓ Credit card: use the donation form on the back of this page
- ✓ Contact Cheryl at LCAC to arrange automatic monthly payments

SALE REPORT

Teresa Ainsworth

The 2011 Fall Sale was a spectacular (in all senses of the word) success.

It was our second highest ever sales. The sale looked great - it was really well laid out (great job Beth on the floor plan and Kyle, Chris and Gene on the set-up) with good spacing and lots of room to maneuver. People really

designed their tables so they looked enticing (I was lured into buying more than I had intended to). The People's Choice Award winners for best display were Sandra Paterson & Ana Mattos, and Andrea Vuletin. The music duo added to the ambiance.



Thanks to the crew who packed up the studio, loaded stuff onto the trailer and cleaned. When I came in to help on Wednesday with cleaning - it was all done. Not that I am complaining, mind you. The set up on Thursday went smoothly - it allowed people more time to shuffle their works around so they were shown to their best advantage and there wasn't the pressure to rush to get it done by 5 pm as in previous years. Nice table of emerging artists' work - who have already emerged in my opinion. Hope your first sale was an exciting one.



Thanks to Nancy Friedrich who had the unenviable task of sorting sale contract envelopes by mailing date and having to tell people they were too late to make it into the sale. Not a pleasant task but it emphasized the need to look for a bigger space for the next sale (in Fall 2012), or to consider splitting the sale over our two floors. So if any of you have suggestions for a new sale venue which fits the following criteria, please let the sale committee know asap. We are looking for a site with ground floor level access or with a loading dock (no carrying boxes up stairs); 5000 square feet in one room preferably, or in adjoining rooms; lots of parking, preferably free; relatively central; and not too expensive. Think about it whenever you are going to events and take mental notes.

We are not planning on having a Spring Sale in 2012. The Guild is hosting the annual Fusion Clay and Glass Conference the last

weekend of May, 2012. Guild members, including the sale committee members, will be really busy with the Fusion conference, the wine and cheese reception at the Guild, the exhibition at the Guild, and all the pre-conference workshops, so we will not have time to do justice to a Spring Sale in April. We'll be sending out more information as time goes on.

Your Sale Committee is: Teresa Ainsworth, Pat Ball, Nancy Friedrich, Ethel Mitrovic, Judy Sparks, Sandra Patterson, Anne Rintala-Dempsey. Welcome new volunteer members Cathy Roberts and Tammy Ward. Retiring from the committee after three years: Gene Timpany and seven years: Beth Turnbull Morrish. Please note that the Sale Committee is looking for a new leader or two people to take on the position of Co-Chairs.

Thanks again to everyone who helped with the sale, especially those who weren't even in the sale- we couldn't have done it without you.

CLASSES

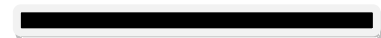
Genet Hodder

Taking a pottery class is a great way to begin the new year. The winter class schedule, starting the week of January 9, offers an exciting array of courses for people at all levels of experience. Winter classes will include the

usual General Pottery I and II, Wheel Concentration I and II, Children's Pottery, Parent and Child, and Teens in Clay.

New this time are the following classes: Beyond Fresh, a follow-up for students who took Nancy Marshall's Refresher Course, which will also run again; Advanced Clay Study with Kyle Thomson, an enhanced version of the Masters Class offered before; and New Ideas in Handbuilding with Rene Wortel. In addition, a sculpture class, Sculpture: The Human Head will be offered on Friday afternoons with Joanna Mozden. (<http://www.Joannamozden.com>)

As you can see, we are offering a very full schedule of classes, which run for eight weeks and end the week of February 27. Registration can be done online at www.londonpottersguild.org or by calling Cheryl Radford on Mondays or Tuesdays (9-3) or Friday, (9-11) at 519-434-1664. Printed brochures are available at the centre, or at libraries throughout the city.



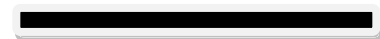
STUDIO REPORT *Chris Snedden & Gene Timpany*

Hello Studio Members! Thank you to all the people who worked so hard to get the studio ready for the show and to help put it back together. It was a lot of work but boy that elevator made life easier!

I just want to say thank you to you all for your patience and help in running the studio. This is the last studio report I will write, as it is our privilege to have David Moynihan coming on board as your new Studio Technician in January! The contract term had come up, and the board decided on a series of procedures that were super fair, to open up the position to the general assembly of the guild. After long and hard debate, and a series of interviews, they came to pick David, and we support their decision. Both Gene and I are excited for this transition and know that we have many exciting opportunities ahead of us! Also that it is good to have new influences and a fresh eye to operational problems around the studio. We are behind David 100%!! He's an awesome potter, as many of you know, and will be a tremendous asset to all of us. Plus he's just a super nice guy.

I'm sure I speak for Gene in saying that we have enjoyed the opportunity to serve you as we moved into our new space and began establishing operational systems. There has been a great deal of experimentation and we are always trying to get better at the reclaim problem, the kiln problem, the glaze problem, and the cleaning problem. We have needed to move a tremendous amount of work through the studio and we appreciate all the enthusiasm, support, and assistance that you have given us in our goal to create a fun and healthy environment in which to work! You are the best! You make me so proud of my guild!

Cheers, and have a great holiday season! See you around the studio!



STUDIO POTTER PROGRAM *Elly Pakalnis*

We will offer 3 sets of presentations relating to the use of the studio facilities in 2012. LPG Studio Members are required to attend the following workshops to complete the Studio Pottery Program:

1. Studio Maintenance,
2. Glazemaking,
3. Kiln Loading and Firing, &
4. Reclaim.

The program has been set up to familiarize members with the running of a studio, to help at the LCAC, and to help members set up their own studios.

Stay tuned as emails will be sent in the new year with dates of presentations, and notices will be placed on the bulletin board.



LCAC FIRST BIENNIAL EXHIBITION *Jane Paterak*

In June of 2012, the London Potters Guild will be hosting its first major biennial exhibition at the London Clay Art Centre. The exhibition will be open to participants in the Southwestern Ontario region. The deadline for submissions is March 9th, 2012 and the show will run from Friday May 25th to June

25th. The jurors are Steve Irvine and Chandler Swain.

There will be several prizes awarded including best in show, best functional, best non-functional, and best novice. Submissions will be by photo only, so to help members out we will be hosting a photography workshop in late February – more to come on that. Start to think about what you would like to submit for the exhibition. Each participant can submit up to three pieces. We look forward to seeing all your best works!

More details can be found on the website along with a call for entry form that you can download. Extra copies of the call for entry will also be made available at the London Clay Art centre.

LIBRARY REPORT

Teresa Ainsworth

We have had a few new books donated to the library and one new DVD from Sandi Pierantozzi – an amazing handbuilder. I have watched it several times and kept saying “I never knew that.” I hope to be in the studio more often once I retire in late January, so the library will be available more often. Don’t forget to return the books or DVDs promptly – we always open the library during the general meetings and anytime you can find me in the studio.

INTERNAL WORKSHOPS

Patti Wilk

The Internal Workshops are ready to go for next year. We had a great response to the 2011 Internal Workshops, so please note that the forms are due by January 31, 2012. Attached at the back of the newsletter is the line-up for you to choose from. Please read carefully. I’m looking forward to another wonderful year of fun and learning together.

PROGRAMS

Alice Nagus



October was a blast thanks to Ryn Tanaka. Ryn makes her own stamps, which are clay friendly, and she was a great hit at Fusion this year. There was difficulty in setting up her display as people were anxious to purchase at least one stamp. Ryn had demonstrated the various ways her stamps could be used, which only added to the excitement. At Sunday's internal workshop led by Sandy Harquail, Ryn's stamps made several appearances. We're lucky that Ryn makes her home in London.

November's program title sounded ominous: "How to critique your work" presented by Chris Snedden. He discussed the Elements and Principles of Design such as line, shape, direction, size, texture, colour, and value. He brought along a number of pictures to demonstrate what he was talking about. Quite a number of people brought in their mugs and discussed what they were trying to show with their mug. The audience then discussed what made that particular mug work, and what might enhance future pieces.

This was an exceptionally informative session – a discovery tour, if you like. The strong responses from the attendees revealed everyone was paying rapt attention.

We haven't done anything like this before, and now I'm wondering why not. We all learned something. Thank you, Chris.

January 10th we will have George Vanostrand, who will be explaining how and why he does wood burning & ash glazing. This should be of interest to all, but especially to those who have wondered how wood burning & ash glazing can be done. It promises to be an insightful evening.

MEMBERSHIP

Teresa Ainsworth

Welcome to new members - Ashley, Mathias and Linda. The studio is gaining new members from the classes after every session, so the teachers must be doing something right. For those studio members who only come infrequently, as of October we have changed the passcode to get into the building. If you don't know the code, please email or call me and I will give it to you. (phone: 519-432-7387 or email: memberchair@londonpottersguild.org). I would hate to have you stuck outside like a few of our members have been.

Don't forget that as part of your membership you get a discount on classes and workshops compared to non-members, so take full advantage of this. There is a new set of classes starting in January and one of those classes is an advanced class with Kyle on design and skill development. We'll see examples of pottery from makers around the world, see demos of new and different shapes, and take our pottery up a notch. Although the homework is challenging, it really does help; throwing 20 mugs with different handles for the next class really made me think about why I use certain mugs and why other mugs always stay in the cupboard.

Check out the new set of internal workshops at the end of this newsletter and sign up right away. The internal workshops fill up quickly.

STORE

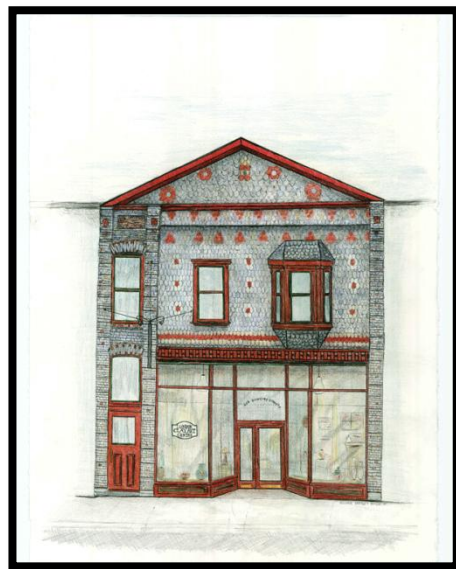
Genet Hodder

The LPG Store was, as usual, dismantled the week leading up to the LPG sale, but resumed the week following for holiday shoppers. Guild members were encouraged, as always, to bring in their best work. Quality is key in making our store a success, as is a large assortment of types and styles of pottery, and keeping regular store hours! For the record, we are open every day from 11 to 3, with extended hours on Monday and Tuesday when Cheryl is on duty.

If you have not had pottery in the store and would like to do so, please bring in a representative sample of your work for jurying. Once juried into the store, you will be asked to list pieces for sale on an inventory sheet, put on price stickers with coordinating numbers, and sign up for hours in the store (about one shift a month). Potters who live out of town and cannot easily do hours in the store should make other arrangements with either Genet Hodder or volunteer coordinator Penni Stoddart. The store coordinator works in the store most Fridays, so is there to coordinate jurying, put work out on display, dust and tidy up display units, and see that the store is running smoothly.

OUR HISTORICAL CORNER

Gene Timpany



664 Dundas Street, London Ontario

The building which now houses the London Clay Art Centre was first listed in the business directory in 1896. Prior to 1896, the lot served as parking for Robertson & Co dry goods store located next door. The stained glass window that we found in the wall dates from 1892 when Robertson's was in operation. The property was sold in 1896, and a roof was added spanning the two buildings on either side. This is why we have the only peaked roof on this end of the block.

The new owner was William Isaac who ran a butcher shop out of the front of the building until 1900. In 1901, J.E. Vanderburgh opened a bicycle livery shop, which was purchased by J.H. Cunningham in 1902.

In 1907 the store became a restaurant, first owned by Peter Grist, and later by P. Hrisikos. A restaurant was in business until 1916 when the store became Standard Drug Ltd.

See more of our history in the next addition of the newsletter.

Sources:

- London Public Library
- Old East Village, Building Our Heritage
- London Advisory Committee on Heritage, Department of Planning & Development

ANNOUNCEMENTS AND EVENTS

New Recycling System

LCAC has no recycling because of our location, (City of London curbside recycling is available to businesses located on existing residential collection routes) therefore we are asking members to take their own recycling home. There will no longer be blue bins at LCAC. Please continue to recycle.

Free Clay

For every 10 lengths of clay you pug, you get to keep one!
Many Hands make light work!

Personal Items at LCAC

If you leave any personal items (eg. cubbie contents) at LCAC, please be aware that they are not covered by insurance.

Security at LCAC

When leaving LCAC always check and make sure that the

front door is locked. Front door should only be unlocked when store is open (11am to 3pm)

Towels

Please bring an old towel from home for working at LCAC, as towels will no longer be supplied by LCAC.



EXECUTIVE LISTING

President

Nancy Marshall
nancy.marshall@yahoo.ca

Past President

Marilyn Barbe
mbarbe@execulink.com

Secretary

Elly Pakalnis
ellyp2003@yahoo.com

Treasurer

Laila Costello
lailart@live.ca

Classes

Genet Hodder
genethodder@rogers.com

Membership

Teresa Ainsworth
tainsworth@odyssey.on.ca

Visiting Artist & In-House Workshops

Chris Snedden
clayguy4u@chrissnedden.com
Nancy Marshall
Nancy.marshall@yahoo.ca

Studio Technicians

Gene Timpany
gtimpster@gmail.com
Chris Snedden
clayguy4u@chrissnedden.com

Programs

Alice Nagus
anagus@sympatico.ca
Elly Pakalnis

Sales

Beth Turnbull-Morrish
turningbullpottery@hotmail.com

Volunteer

Penni Stoddart
penelopepots@rogers.com

Seize the Clay

Darlene Pratt
prattdarlene@rogers.com

Publicity and Public Relations

Webmaster

Julie Ryan
julieryanhome@rogers.com

Newsletter Editor

Brendan Wilson
bwilso24@gmail.com



London Potters Guild
Seize the Clay Campaign
 72-900 Pondview Rd.
 London, ON
 N5Z 4L7
 519-680-3874

Yes! I want to support the London Potters Guild “Seize the Clay Campaign”

Enclosed please find my gift in the amount of: \$ (Canadian Dollars)

Last Name:

First Name(s): Middle Initial:

Company: (if applicable)

Title: (if applicable)

Address:

Address (2):

City:

Province: Postal Code:

Phone:

Email:

This gift is in honour of

This gift is in memory of

Please send acknowledgement card to (name, full address):

I/We work for a company with a Matching Gifts Program. This gift will be matched by:

Payment type:

Cheque is enclosed. (Please make cheques payable to “The London Potters Guild”)
 or
 Credit Card:(check one)
 VISA MASTERCARD

Credit card number: Expiration date:

Signature: _____

A charitable receipt will be issued for the full amount of your donation.
 The London Potters Guild is an Incorporated Not-for-Profit Charitable Organization
 No. 886676790RR0001

Internal Workshop Descriptions:

Mould Making – Anthony Veilleux

Saturday & Sunday, March 17th & 18th

This course is an introduction to the fabulous world of silicone mould making. We'll be making moulds and reproductions of a small (2-3") three dimensional object of your choice.

Beautiful Bowls – David Moynihan

Sunday, May 13th

Want to get good at making bowls? In "Beautiful Bowls", David Moynihan will be teaching us three dependable methods for throwing wonderful bowl forms. We'll be experimenting with 1, 2, and 5 lb bowls. Come get the inside scoop on perfecting rims and foot rings. David will even show us how to get rid of the "beginner humps" most of us battle.

Extruder Magic – Ana Mattos

Sunday, July 15th

Come and learn about this underused simple machine! Discover great ways of making functional and sculptural works with it, while learning how to make dies with your own patterns.

Hand Built Teapots – Andrea Vuletin

Sunday, September 23rd

Learn to make a hand built teapot that works! We will construct a teapot or two, time permitting, from slab, using templates. We will also look at a few ways to create a spout and handle that are balanced, function well and are design elements that work with the teapot body and the potential surface decoration.

Contemporary Design: Taking Your Vessels To The Next Level

Jessica Steinhauser

Sunday, October 28th

Take your pottery designs to the next level with Jessica Steinhauser. She will be aiding you in refining your own vessel shapes to enhance their aesthetic appeal. Included in her workshop will be lid making and pulling handles off the vessel for a seamless and flowing finish.



**London
Potters
Guild**

London Potters Guild
C/O London Clay Art Centre
664 Dundas Street London, ON. N5W 2Y8
Tel: 519-434-1664
www.londonpottersguild.org

Internal Workshops for 2012

All workshops will be held @ LCAC. They will run from 9am to 4pm unless otherwise noted.
Contact Person: Patti Wilk Telephone 519-858-0815 or email h-p-wilk@rogers.com

Name: _____

Fill in your requested workshops in the chart below and mail ASAP

Please Leave Blank	Choice # 1-5	Subject	Cost	Instructor	Date
		Mould Making	\$40+hst= 45.20 + material fee	Anthony Veilleux	Sat & Sun Mar 17&18 *11am-4pm
		Beautiful Bowls	\$30+hst= 33.90	David Moynihan	Sunday May 13
		Extruder Magic	\$30+hst= 33.90	Ana Mattos	Sunday July 15
		Hand Built Teapots	\$30+hst= 33.90	Andrea Vuletin	Sunday September 23
		Contemporary Design: Taking Your Vessel to the Next Level	\$50+hst= 56.50	Jessica Steinhauser	Sunday October 28

Please mail in this sheet by January 31, 2012 to: Patti Wilk, 99 Orkney Cres, London, ON N5X 3R8
If you prefer, you can drop it off at LCAC in the internal workshops bag located on the end of the new larger cubby shelving.

A committee will open the sheets at random and attempt to register you in your 1st choice. If your first choice is unavailable (workshop is full) you will be placed on a waiting list for your first choice and registered in your second choice. We will go through all the sheets in the way and then repeat with peoples' second choice and so on.

These sheets will be returned to you at the February 14th meeting and at that time you can pay for the workshops for which you are registered. If you cannot be at the meeting, please have a friend pay for you so that you do not forfeit your spot. Please note that participants provide their own clay for the workshops.

Receipt: _____

Amount _____ Date _____

Treasurer _____